

spring 2026

# Update



**SUNY**  **TRANSFER**  
SEAMLESS TRANSFER, LIMITLESS POSSIBILITIES



# staffing updates

- **Rachael French**  
Transfer Project Manager and Analyst
- **Transfer Fellow**  
Focused on developing SUNY transfer articulation capacity and assistance to campuses.
- **Reverse Transfer Analyst (Approved)**
- **Full Time Articulation Support (Proposed)**



# state of the university



## **Student Success, Retention, and Completion**

- Expansion of ASAP and ACE Programs
- Academic Momentum
- Improving Student First Year Experiences

## **Career and Workforce**

- SUNY Reconnect Expansion
- Internships and Career-Connected Opportunities

## **Research, Artificial Intelligence and Innovation**

- Broader Investments in Semiconductors, Quantum Science, Biotech, and Energy
- Responsible, Faculty-Led Integration of AI into Academics

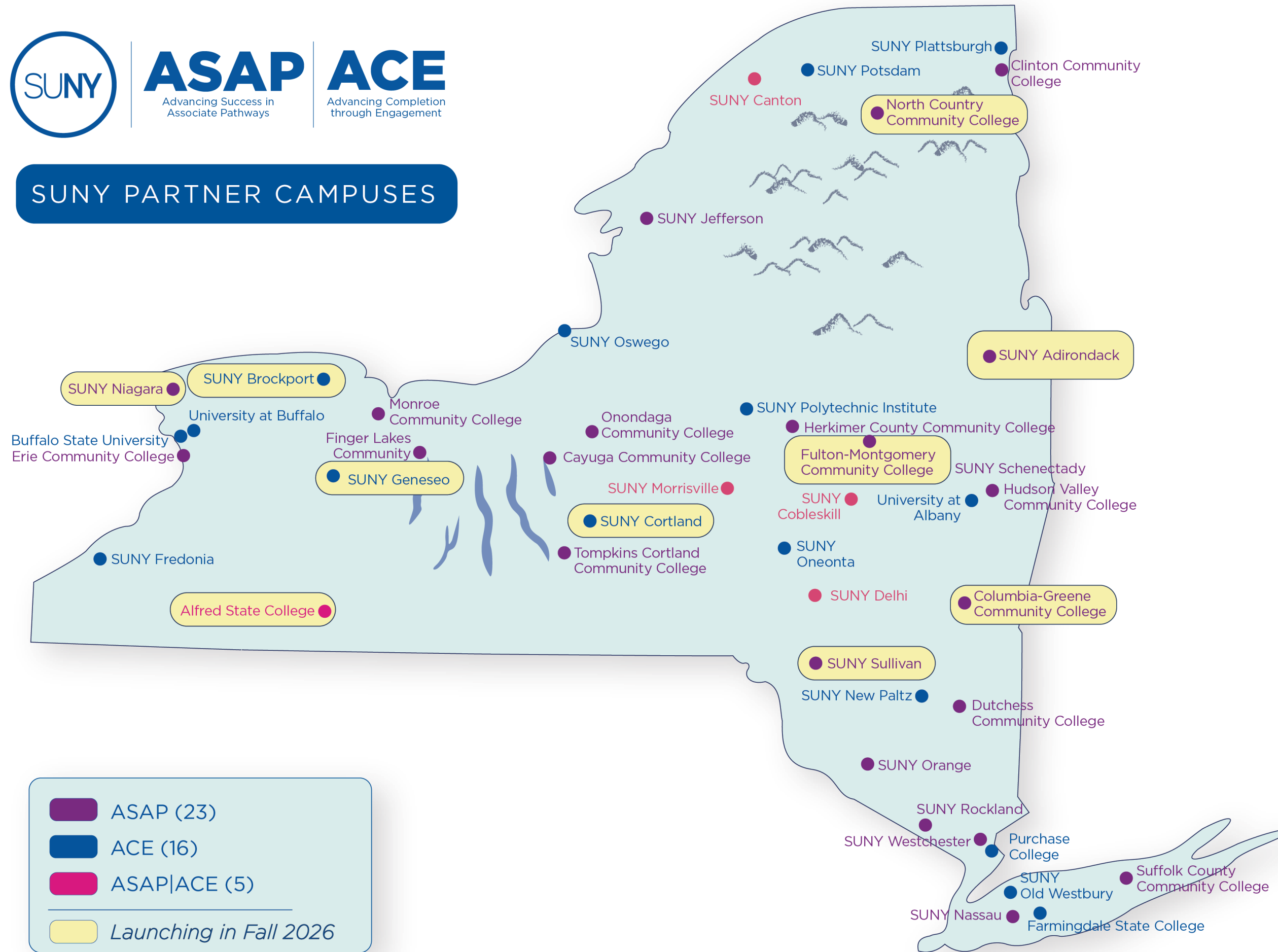




**ASAP**  
Advancing Success in Associate Pathways

**ACE**  
Advancing Completion through Engagement

**SUNY PARTNER CAMPUSES**



# aligned priorities

of interest to sunyra

## Transfer Evaluation Services

Expanding current processes, creating more automated options, getting better data.

## Technology for Staff

System-wide transfer processing and evaluation tools for campus staff and faculty.

## Cross-Registration

Revamping the technology, policy and consortium rules and agreements.

## Comprehensive Record

Investing in tools to advance SUNY-wide access to enhanced transcription.





# reverse transfer

- **Community College Support**
- **Better Data Sources**
- **Automated / Near-Automated Processes**
- **Budget for Technology, Staff**
- **Development Teams (2026-2027)**
  - Recommendation Phase
  - RFP and Procurement Stage
  - Implementation

# seamless transfer initiative

- **55%** complete or in production
- **23%** in active development
- **16%** scheduled or pending
- Clear, sustained forward momentum across portfolio



Planned / Future

16%



Active Development

23%



Launched

54%

of projects are complete or launched and in production.



# progress

- Governance and Structure
- Transfer Bill of Rights
- Communication Framework
- Second Pass Procedures
- STEP Online Tools
- Integrated Catalog
- Campus Support Portals
- Campus Profiles
- Transfer Liaisons
- Training and Support
- Transfer Path Reboot
- Transfer Path Online Tools

# suny transfer paths



- **Redesigned Faculty Guidance and Development Standards**
  - Limitations on Exceptional Guidance
  - Restating Lower Division Focus
  - Specific Advice and Guidance
  - Minimum Number of Core Courses
- **Identified Transfer Paths for Redevelopment / Review**
- **Additional Development of Online Systems**



# Transfer Path Planner

[Home](#) / [Transfer Paths](#) / [Plan](#) / [Art Studio](#) ⊗ / [Broome](#) ⊗

## Broome: Art Studio Transfer Path

The lower-division major courses for your selected discipline can be fulfilled at Broome using the courses identified below. Please review the corresponding SUNY Transfer Path documentation to determine which combination of these courses is recommended. You are encouraged to learn more about transfer path options, policies and support available at Broome by using the [Support Directory](#).



Core Course ⓘ	Equivalent Broome Course ⓘ	Notes
2D Design	<a href="#">ART105</a>	
3D Design	<a href="#">ART106</a> or <a href="#">ART120</a> or <a href="#">ART213</a>	
Art of the Western World I (Ancient through Medieval)	<a href="#">ART102</a>	
Art of the Western World II (Renaissance through 20th Century)	<a href="#">ART103</a>	

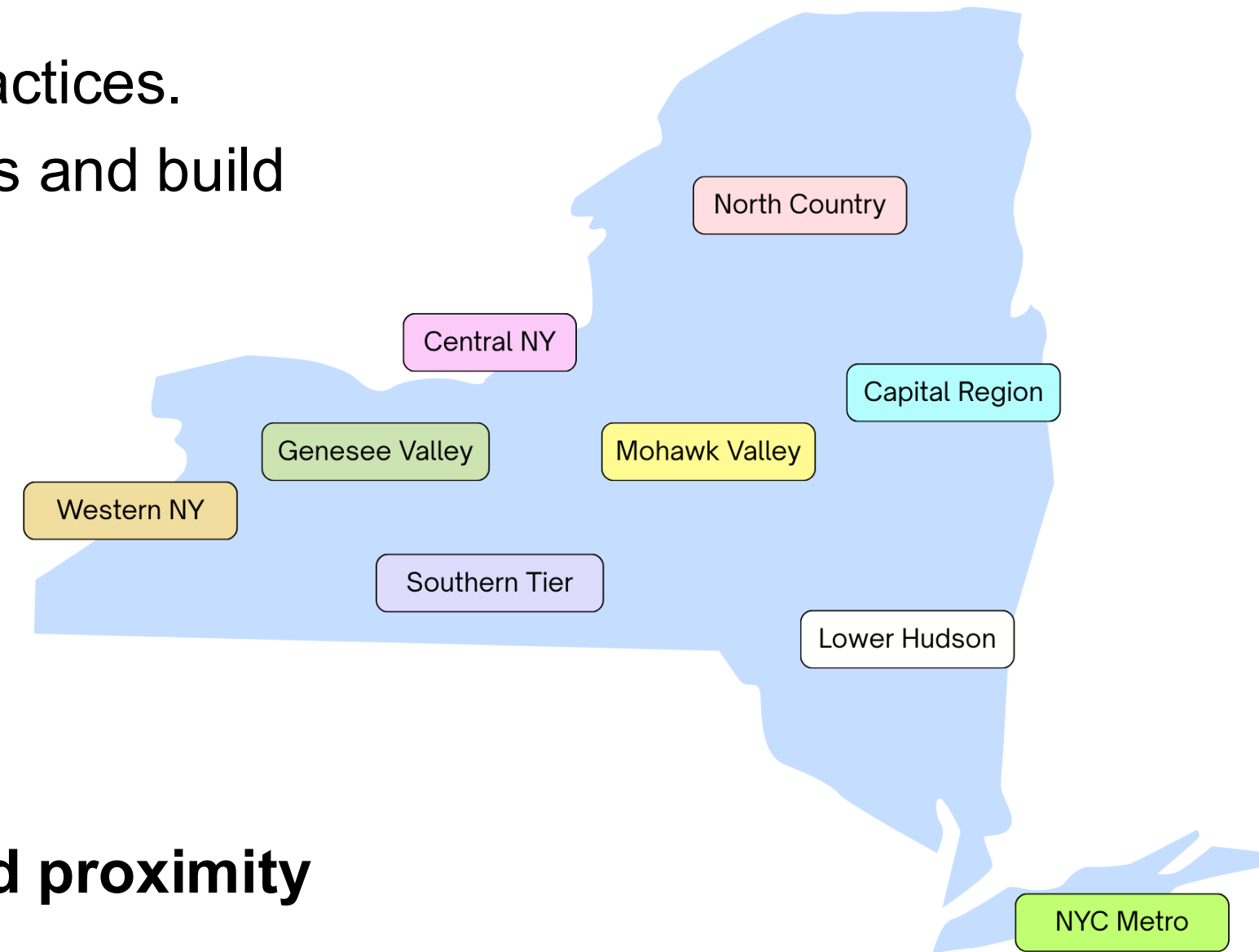
# policy rollout

- **Policy Approval at BOT Meeting**
- **Next Steps**
  - Needs Assessment
  - Guidance
    - Phased Guidance Rollout
    - Templates and Timelines
    - Extended Timeline Support
  - Public Meetings
  - Technical Teams
  - Drop-ins



# regional networks

- **Coordinated approach to strengthening transfer.**
  - Systemwide convening to align priorities and share best practices.
  - Sustained regional collaboration to address local challenges and build partnerships.
  - Ongoing advising network to support consistency and student success.
- **Fostering more consistent practices, stronger campus partnerships, enduring support, and improved student experiences.**
- **Proposed networks are based on data-driven analysis and proximity**



Regions

Regional Crossover

Select a Term

All

Sending Region

- Select all
- Capital Region
- Central New York
- Genesee Valley
- Lower Hudson
- Mohawk Valley
- North Country
- NYC Metro

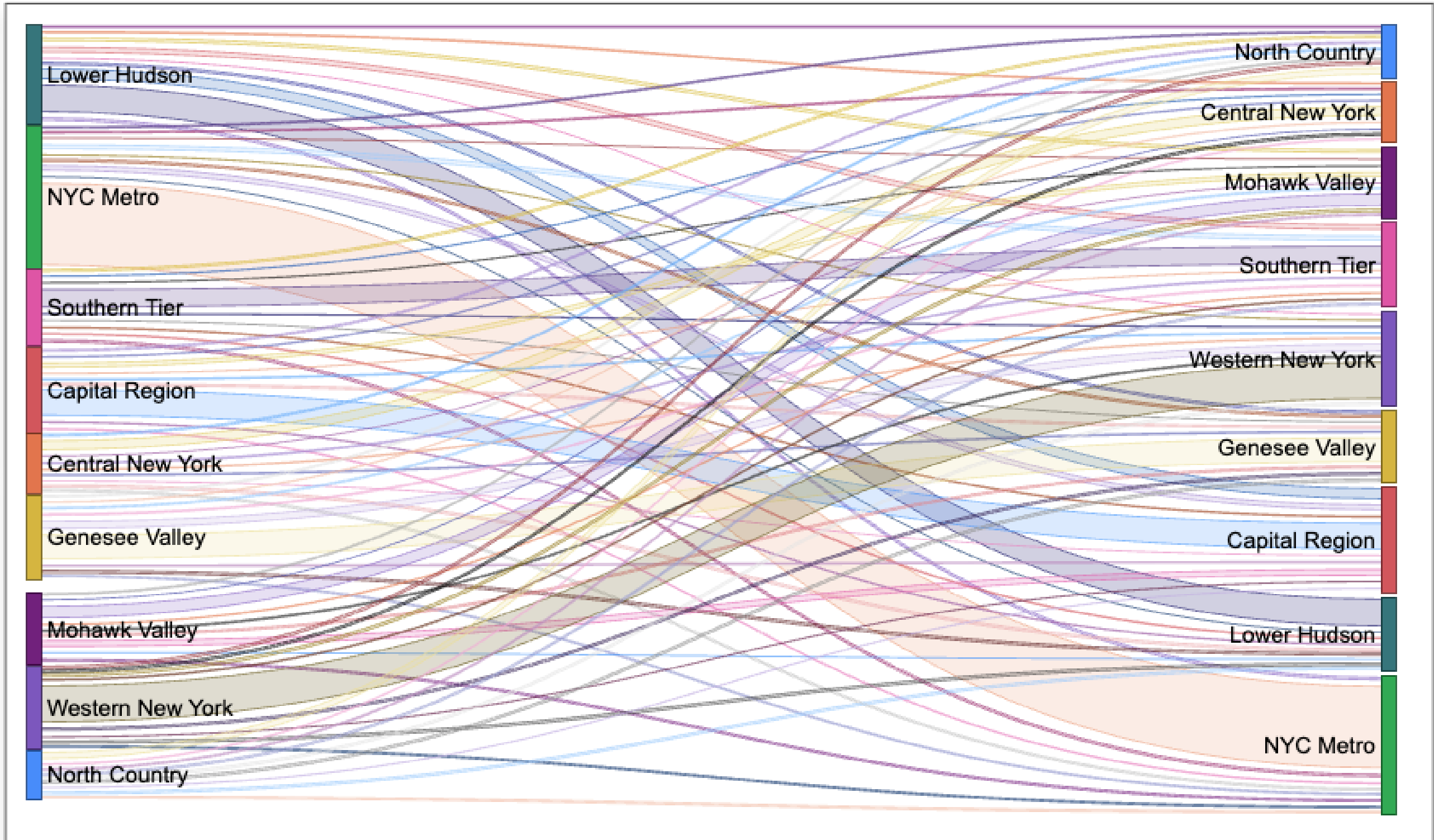
Receiving Region

- Select all
- Capital Region
- Central New York
- Genesee Valley
- Lower Hudson
- Mohawk Valley
- North Country
- NYC Metro

Sending Region

Sending and Receiving Regional Crossover

Receiving Region



Metro





# additional projects

- **Internship Data Collection \***
- **Campus Profile**
- **Transfer Agreement Database / Catalog**
- **OHEP Transcript and Data Sharing Project**

# suny state of transfer

- Overall, we are seeing growth in transfer enrollment.
- Many campuses have met or exceeded early post-pandemic levels.
- Notable shifts in recent terms.



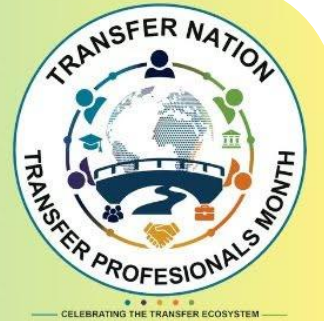
# transfer professionals month

- **Monthlong Series of Events – July 2026**

- Week 1 Roots of the Ecosystem
- Week 2 Pollinators of Success
- Week 3 Pathways and Migration
- Week 4 Growing the Ecosystem



## Call for Nominations!



*Celebrate. Recognize. Inspire.*

Transfer Nation is seeking nominations of transfer professionals to be recognized during Transfer Professional Month this July for their dedication to the transfer community.



WE ENCOURAGE NOMINATIONS FOR TRANSFER PROFESSIONALS WHO:



SUPPORT



EMPOWER



CHAMPION

**SUBMIT A NOMINATION TODAY!**

Help us celebrate the *difference* transfer professionals make.

Accepting nominations on a rolling basis until July 10.



# thank you

**Dr. Thom Hanford**

Assistant Vice Chancellor for Transfer and Articulation

thomas.hanford@suny.edu | <https://transfer.suny.edu>

